

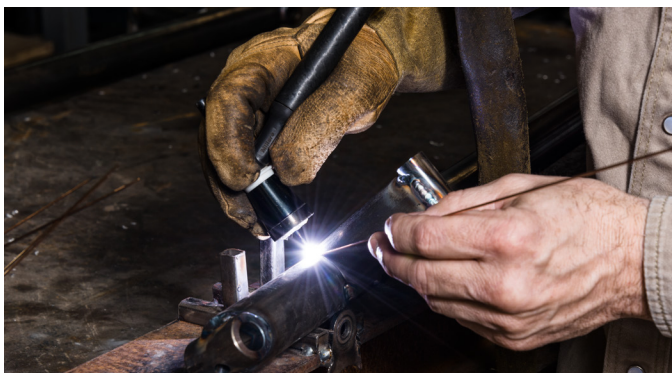
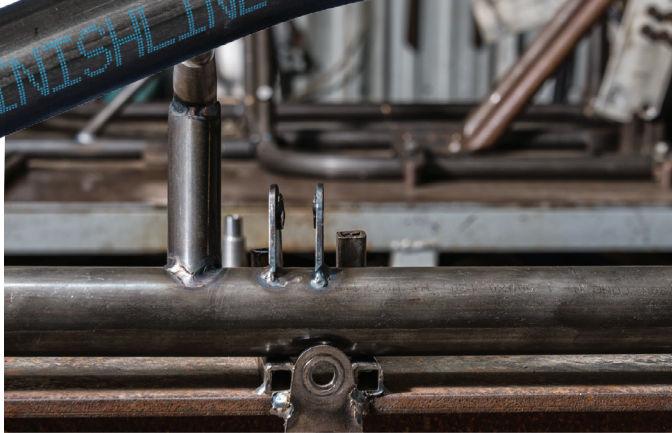


***Leading the Pack in Chassis Tubing***

***FinishLine*** *CrMo*<sup>®</sup> ***FinishLine*** *HS*<sup>™</sup>

**Meets the exacting mechanical, dimensional, and finish properties  
today's chassis builders and drivers require.**

# CONSISTENCY:



## *Tube to Tube*

- ✓ Consistent performance off the rack and on the track – Webco's process controls mean repeatable mechanical and dimensional properties...heat to heat, order to order, tube to tube.
- ✓ We know you care about tube surface finish conditions. Webco's precision cold-drawing and atmosphere-controlled thermal processing achieve industry-leading surface finish conditions. Welders, painters, and ultimately the pit crew can believe in their chassis.
- ✓ Consistency tube-to-tube equals speed and predictability. Predictability means knowing exactly how your material and your car are going to respond, leading to race teams and chassis builders getting to the finish line faster.

## *Order to Order*

Webco's superior control of manufacturing processes and mechanical properties delivers consistently outstanding fabrication performance in:

- |           |                     |
|-----------|---------------------|
| ✓ Bending | ✓ Weight / Strength |
| ✓ Welding | ✓ Surface           |

*Performance Tubing for:*

- ✓ NASCAR
- ✓ Dirt Track Modified

- ✓ Late Model
- ✓ Sprint/Outlaws

## Chassis to Chassis

- ✓ Available in Chromoly (CrMo), Drawn Over Mandrel (DOM), and as Centerless Ground (CG).
- ✓ Available in a variety of diameter and wall combinations for chassis, roll cages, and other critical components to give drivers the competitive edge.
- ✓ FinishLine<sup>CrMo</sup>® and DOM size ranges:
  - OD – 0.500" – 3.000"
  - Wall – .065" X .375"

## FinishLine<sup>CrMo</sup>®

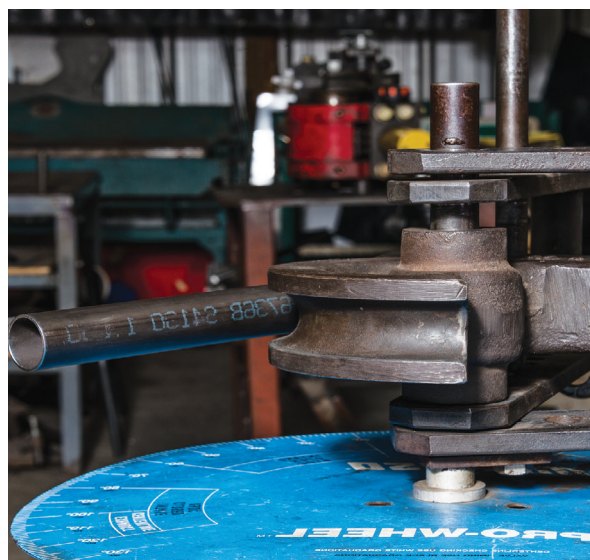
- ✓ Webco manufactures Chromoly Tubing products with superior mechanical and dimensional properties.
- ✓ Webco's FinishLine<sup>CrMo</sup>® Tubing is manufactured in the USA using world-class seamless raw materials. The 4130 steel grade is alloyed to increase strength, while providing excellent ductility and toughness.
- ✓ Tubing produced to meet or surpass aircraft quality specification AMS 6360.

## FinishLine<sup>HS</sup>™

- ✓ High strength 4130 grade option available upon request.
- ✓ Produced to AMS6360 with mechanical properties in accordance with SFI Spec 2.3.
- ✓ For frame tubing used in Top Fuel Rear Engine Dragster applications.

## Race to Race

FinishLine<sup>CrMo</sup>®  
is trusted by  
Indianapolis 500  
Top 3 2023 Driver  
Santino Ferrucci



✓ SCCA

✓ Kart

✓ Drag/Top Fuel

✓ USAC/Midget

✓ Funny Car

✓ Asphalt Late Model Stock & Supers



## ***Why choose Finishline<sup>CrMo</sup>® chassis tubing from Webco?***

- ✓ Seamless and welded DOM and CrMo cold drawn seamless tubing available in various sizes with consistent performance and finish characteristics.
- ✓ Readily available in 4130 grade.
- ✓ Webco offers mild carbon grades available in both welded and seamless DOM products.
- ✓ Webco can provide CrMo or DOM tube products as centerless ground, allowing for exceptional surface and weight control.
- ✓ Manufacturing and testing performed in Sand Springs, OK, USA.
- ✓ Mechanical and dimensional consistency exceeds industry standards.
- ✓ The Webco technical support team, backed by more than 50 years of manufacturing experience in tubular products.

